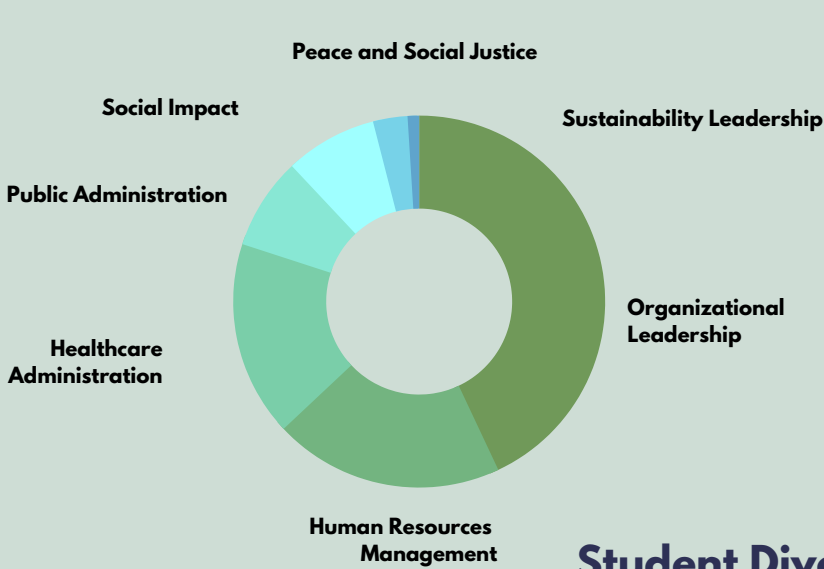


# 2021 STUDENT DEMOGRAPHICS

(Based on Student Population as of 9/6/21)



## Program Enrollment

CLU students learn alongside one another in the Claremont Core®, taking courses which emphasize the skills of Mindfulness, Dialogue, Collaboration, and Change. Each cohort then pursues its own course of study in Organizational Leadership, Human Resources Management, Healthcare Administration, Public Administration, Social Impact, and Peace and Social Justice.

<b>Organizational Leadership</b>	<b>41%</b>
<b>Human Resources Management</b>	<b>20%</b>
<b>Healthcare Administration</b>	<b>16%</b>
<b>Public Administration</b>	<b>11%</b>
<b>Social Impact</b>	<b>8%</b>
<b>Sustainability Leadership</b>	<b>3%</b>
<b>Peace and Social Justice</b>	<b>1%</b>

## Student Diversity

Our vision is founded on the conviction that the world's great ethical, philosophical and religious traditions are deep wells of wisdom for bringing people together to address perennial social problems. Our educational approach immerses students in a dynamic learning community and encourages the exploration of diverse business strategies, values, and beliefs.

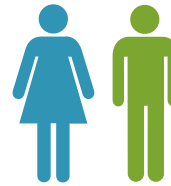


### Residence

<b>California</b>	<b>32%</b>
<b>Other States</b>	<b>64%</b>
<b>Outside US</b>	<b>4%</b>

### Gender

<b>Female</b>	<b>78%</b>
<b>Male</b>	<b>21%</b>
<b>Other</b>	<b>0%</b>



### Age

<b>Median</b>	<b>41</b>
<b>Mean</b>	<b>40</b>
<b>Range</b>	<b>21-66</b>

CLU's current students represent a growing population of diverse perspectives from around the world. Our roots are in Claremont, CA, but our reach is global.

The majority of our students are working professionals, balancing career, family, and community activities. They are multi-generational, each bringing a unique perspective to the classroom discussion.

## Education

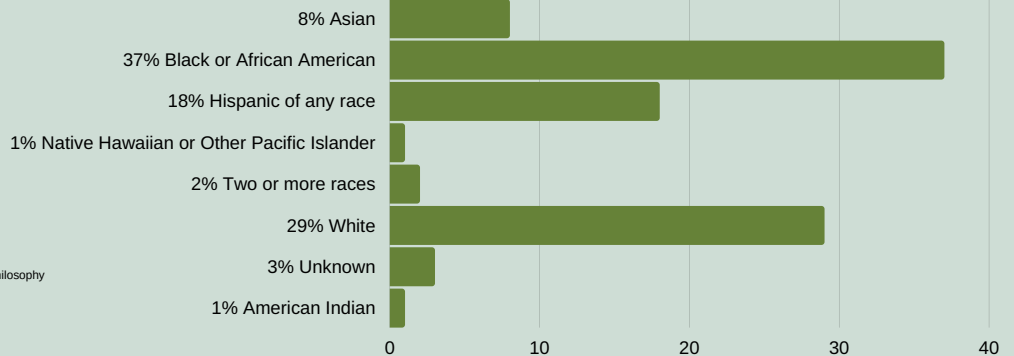
**3.52** Avg G.P.A.

Includes GPAs of all active and graduated students who have completed at least one course.

### Undergraduate Majors

- American Lit and Chicano Studies
- American Sign Language
- Anthropology/Psychology/Sociology Arts Management
- Business Administration Communications
- Counseling
- Criminal Justice
- Design
- Emergency Services
- Engineering
- Finance
- Gender, Women, and Sexuality Health Care
- Health Science
- History
- Human Performance
- Human Services/Social Work
- Instructional Technology
- Law
- Marketing
- Mathematics
- Music Performance
- Nursing
- Organizational Leadership Philosophy
- Physical Education
- Political Studies
- Public Administration
- Public Safety
- Quality Systems
- Religious Studies/Theology/Ministry
- Social Science
- Social Work
- Sociology
- Spanish
- Speech Communications
- Studio Arts
- Urban Studies and Planning
- Visual Communications
- Workforce Education and Development

## Race/Ethnicity



## Industries

Our students represent a cross-section of professionals and experts in a growing number of industries, spanning the private sector, non-profit organizations, government agencies, and faith-based institutions.

